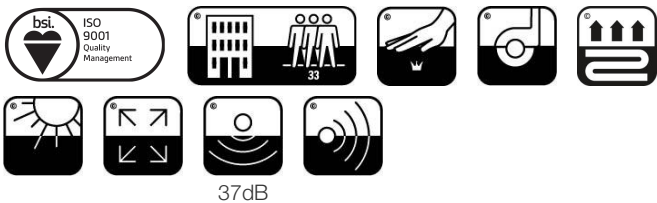
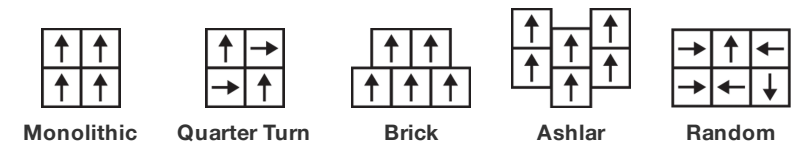


| | | |
|---|--------------------|---|
| Numéro Du Style | C024W | |
| Collection | Kindred | |
| Type De Produit | Dalles De Moquette | |
| Construction | Standard | Data + Performance |
| Type De Fabrication | ISO 2424 | tufted 1/10" 39.4 per 10cm |
| Construction | ISO 2424 | Tufté Structuré Bouclé à Motif |
| Méthode De Coloration | EN 994 | 100% Solution Teinte |
| Dimensions Du Produit | EN 994 | 50 cm x 50 cm 16 tiles (4 m²) per box |
| Sous-couche Primaire | ISO 2424 | Pet Non-Woven |
| Sous-couche Secondaire | ISO 2424 | Comfortworx® Tile La Couche Matrix Pad Contient 90 % De Contenu Recyclé |
| Fibre | ISO 2424 | Ecosolution Q® Polyamide 6 |
| Epaisseur Du Velours | ISO 1765 | 10.0 mm |
| Épaisseur Du Velours Fini | ISO 1766 | 2.1 mm |
| Poids Total | ISO 8543 | 4045 g/m² |
| Poids Tufté | ISO 2424 | 610 g/m² |
| Poids Du Velours Utile | ISO 8543 | 237 g/m² |
| Densité Du Velours | ISO 8543 | 0.111 g/cm³ |
| Données | | |
| Points | ISO 1763 | 136,000/m² 34.5 per 10cm |
| Propension Electrostatique | ISO 6356 | ≤ 2.0 kv (Stroll Test) |
| Classification d'Utilisation | EN 1307 | 33 Commercial Heavy |
| Classification Luxe | EN 1307 | LC1 |
| Stabilité Dimensionnelle | EN 986 | ≤ 0.2% |
| Isolation Acoustique | ISO 10140 | 37db |
| Classification d'Absorption Sonore | ISO 354/11654 | 0.30 Aw Class D |
| Résistance Thermique m² K/w | ISO 8302 | 0.151 M² K/W Tog 1.51 |
| Dry Slip Resistance | ISO 13893 | Pass / No Pulled Loops |
| Résistance De La Couleur À La Lumière | ISO 105-B02 | >6 |
| Inflammabilité | EN 13501-1 | Bfl-S1 (Adhered Testing) |
| Chaise À Roulette | EN 985 | ≥2.4 Continuous USE |
| Limitée Commerciale De 15 Ans subject to installation in full accordance with manufacturer's instructions and a regular effective cleaning and maintenance programme. | | |

Méthodes d'Installation Conseillées



Coordination Des Produits

Carpet Tile: **Dream Comfortworx® Tile, Belong Comfortworx® Tile, Illusion Comfortworx® Tile, Belong Taskworx® Hexagon Tile, Together Hexagon Taskworx® Tile, Dream Taskworx® Tile, Belong Taskworx® Tile, Memory Taskworx® Tile, Together Taskworx® Tile, Illusion Taskworx® Tile**

Attributs + Certifications

| | |
|---|---|
| Déclaration environnementale de produit (EPD) | Certifié Par Un Organisme Tiers Conformément Aux Normes ISO14044, ISO 14025 & EN15804 |
| garantie environnementale | Take Back Policy Offered For All Comfortworx Products |
| ISO 9001 | Certifié |
| pays d'origine | United Kingdom |
| BREEAM Contribution Credit | Certificate of Approval Schools/Offices/Health/Industrial Shed Retail |

Well V2 Contribution Credit

| | |
|--|---|
| X11 Long Term Emissions Control Part 2: Flooring Optimization | M1> Emissions Class For Building Material |
|--|---|

Contribution À La Certification Leed

| | |
|---|---|
| MR Credit: Building Product Disclosure and Optimisation Environmental Product Declarations - Option 1: Environmental Product Declaration (EPD) | 3rd Party Certified in Accordance with ISO14044, ISO14025 & EN15804 |
| MR Credit: Building Product Disclosure and Optimisation Material Ingredients - Option 1: Material Ingredient Reporting | HPD (Version 2.1) |
| "Crédit EQ : matériaux faibles émissions Option 1 : calculs par catégorie de produit" | Certified |

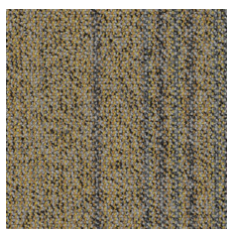
Air Quality

| | |
|-------------------------|-----------|
| Indoor Air Comfort Gold | Certified |
| M1 | Certified |

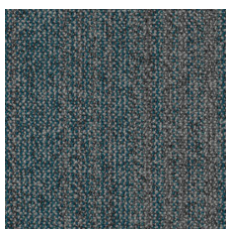
Memberships

| | |
|---------------------------------|---------------------------------|
| WGBC Framework | WGBC Framework |
| UKGBC | UKGBC |
| Emirates Green Building Council | Emirates Green Building Council |
| Chemsec | Chemsec |

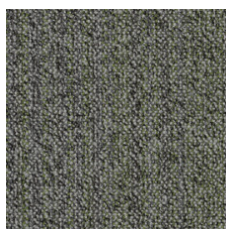
Available Colorways



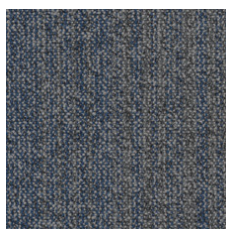
Hearten-Golden 48211



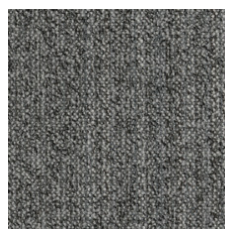
Sense-Comfort 48323



Hearten-Greenery 48370



Sense-Serene 48486



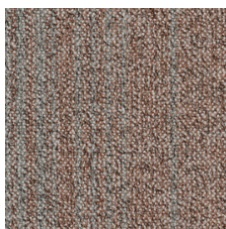
Rainstorm-Hearten 48515



Hearten-Greige 48516



Sense-Rainstorm 48536



Greige-Apricot 48675



Greige-Rosewood 48870

Informations Supplémentaires

**Manufactured in ISO 9001 certified facility. Meets or exceeds all local and national regulations in country of manufacture.

[Installation Guidelines](#)

Limitée commerciale de 15 ans

Specifications are subject to nominal manufacturing variance. Material supply and/or manufacturing processes may necessitate changes without notice.

This product is an exclusive design and may not be duplicated in any manner. Use of this design in the creation of another product design is also strictly prohibited.

Visit shawcontract.com/testing for more information.



Corporate Headquarters +1 800 257 7429 | +1 706 532 7984 | Atlanta +1 404 853 7429 | Bengaluru +91 80 6773 0202 | Beijing +86 10 6568 588 | Chicago +1 312 467 1331 | Dubai +971 4 584 6956 | Hong Kong +852 2623 0371 | Latin America (Miami) +1 305 827 5912 | London +44 207 961 4120 | Los Angeles +1 800 233 1614 | Melbourne +61 3 9939 8543 | Mexico City +55 5010 7600 | Mumbai +91 22 6284 5050 | Nantong +86 400 800 7429 | New York +1 212 953 7429 | Paris +33 (0) 1 81 22 44 39 | San Francisco +1 415 955 1920 | Santiago +562 2431 5000 x 550 | São Paulo +55 11 3071 1702 | Shanghai +86 21 3338 4000 | Singapore +65 6733 1811 | Sydney +1 800 556 302

© 2024 Shaw Industries Group, Inc., a Berkshire Hathaway Company
May 18, 2024

3 of 3